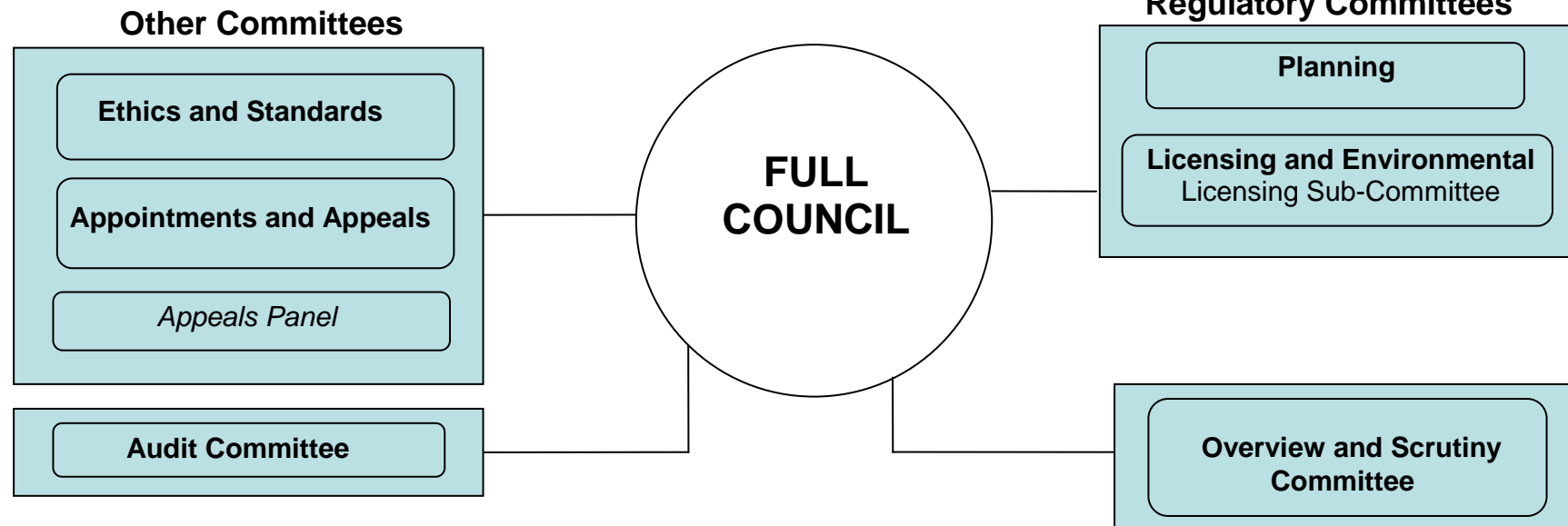




Political Structure May 2019



The Cabinet				
<p>Cllr Graham Ballinger Leader of the Council and Cabinet Member for Strategy and Finance</p> <ul style="list-style-type: none"> • Strategic policy co-ordination • National & Regional Influence • Finance & Audit • Revenues and Benefits • Customer Services • Information and Communication Technology • Legal Services • Emergency Planning • Partnerships, policy and performance • Wyre Forest Forward • Communication & branding, digital services 	<p>Cllr Fran Oborski MBE Deputy Leader and Cabinet Member for Economic Regeneration, Planning and Capital Investments</p> <ul style="list-style-type: none"> • Economic Development and Regeneration • Town Centres • Tourism • Implementation of major regeneration projects • Spatial Planning including Local Plan • Development Management • Land Charges • Building Control • Capital Portfolio fund, development loan fund • Building maintenance, estate and facilities management including Wyre Forest House 	<p>Cllr Nicky Martin Cabinet Member for Housing, Health, Well-being and Democratic Services</p> <ul style="list-style-type: none"> • Strategic Housing, Private Sector Housing & Homelessness • Health and Well-being • Sustainability • Water Management • Democratic Services • Human Resources • Equality & Diversity 	<p>Cllr Helen Dyke Cabinet Member for Culture, Leisure and Community Protection</p> <ul style="list-style-type: none"> • Cultural and leisure services • Countryside services • Regulatory services • Community Safety • Localism agenda including asset transfers; relations with parish councils • Income generation • Safeguarding • Relations with voluntary sector 	<p>Cllr John Thomas Cabinet Member for Operational Services</p> <ul style="list-style-type: none"> • Depot 2020 project • Parks and open spaces • Grounds maintenance • Waste Reduction • Refuse Collection & Recycling • Fleet Management • Street Cleansing • Public Conveniences • Parking Services • Cemeteries • Health and Safety