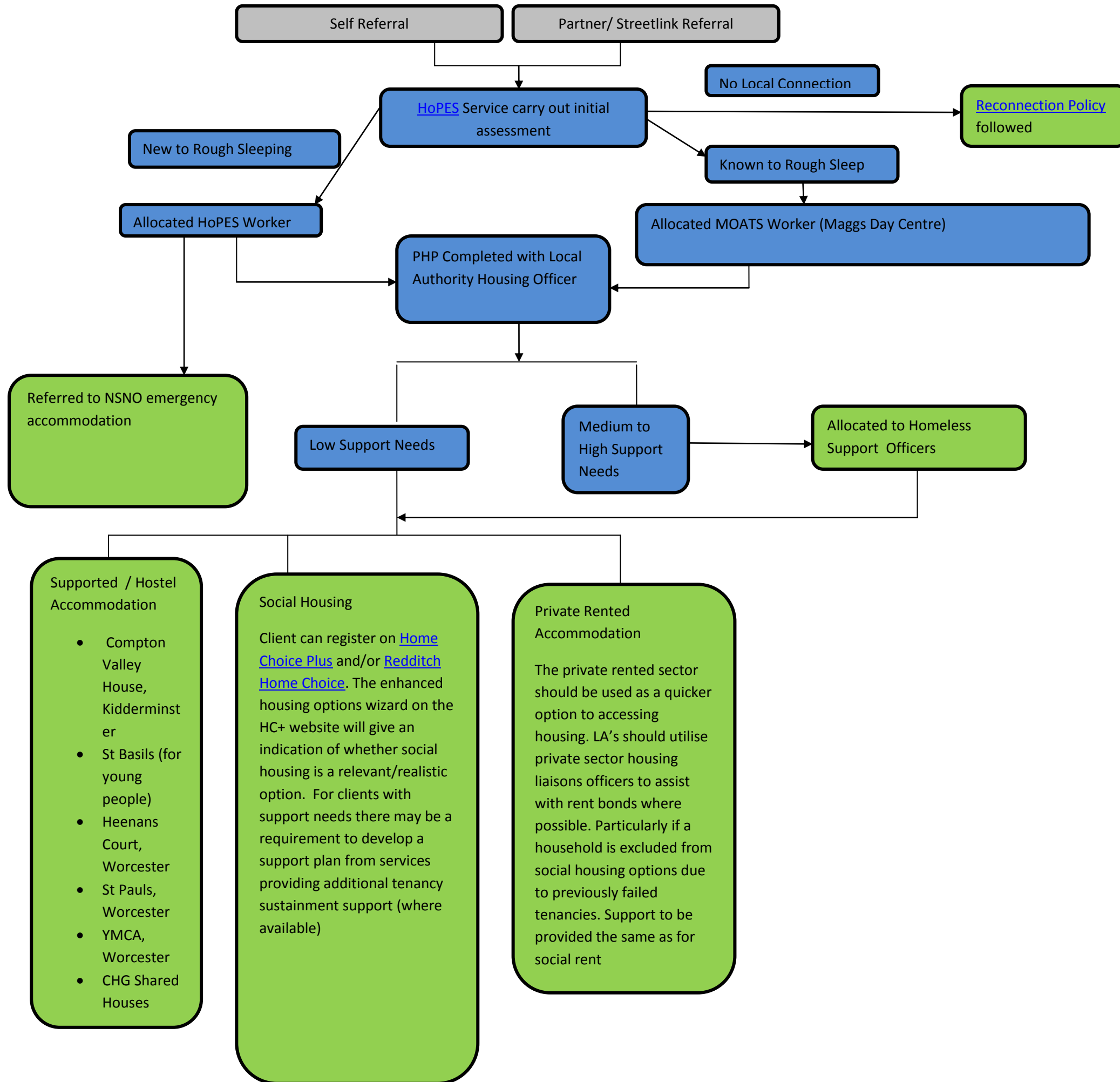


Rough Sleeper – Housing Pathway



Local Authority Housing Options Teams – housing advice and assistance

Wychavon District Council

www.wychavon.gov.uk

Malvern Hills District Council

www.malvern hills.gov.uk

Bromsgrove District Council

www.bromsgrove.gov.uk

Redditch Borough Council

www.redditchbc.gov.uk

Worcester City Council

www.worcester.gov.uk

Wyre Forest District Council

www.wyreforestdc.gov.uk

Local Support Services

HoPES (CCP)

HoPES provide floating support and access to Severe Winter Emergency Protocol / No Second Night Out

Telephone: 0300 3650366

Website: www.ccp.org.uk

Maggs Day Centre

Day centre for the Homeless at Worcester City.

Telephone: 01905 25027

Website: www.magssdaycentre.co.uk

Worcestershire YMCA

Accommodation for single people in housing need

Telephone: 01905 423197

Website: referrals@ymcaworcestershire.gov.uk

St. Paul's Hostel

Accommodation for single people

Telephone: 01905 723729

Website: www.stpaulshostel.co.uk

CAB & WHABAC offer advice and assistance to single or couples without children who are homeless, threatened with homelessness or vulnerably housed.

Telephone: 03444 111 303

Website: www.cabwhabac.org.uk

Nightstop

Nightstop within Worcestershire provides emergency temporary accommodation and support for young people, aged 16-25 who are facing homelessness. They also offer mediation services to help young people rebuild bridges with their family.

Wyre Forest Nightstop – 01562 743 111

The Basement Project

Delivers floating support to those aged 16-25 who are threatened with homelessness. This support can help clients with accessing housing, basic life skills, employment skills and much more.

Tel: 01527 832 993

Website:

<http://www.bromsgrovebasementproject.org.uk/projects/floating-support>

St Basils

Provides housing for young people aged 16-24 who are homeless or threatened with. It is particularly useful in offering affordable suitable housing for young people

Tel: 01562 746304

Website:

<http://www.stbasils.org.uk/st-basils-in-your-area/wyre-forest>

National Support Services

Shelter

Is a national charity that provides specific advice for people on housing and homelessness.

Tel: 0808 800 444

Website: <https://england.shelter.org.uk/>

Crisis

Is a national charity that provides specific advice for people on housing and homelessness

Telephone: 0300 6361967

Website: www.crisis.org.uk

StreetLink

Is the referral service for members of the public to report Rough Sleepers

Telephone: 0300 5000914

Website: www.streetlink.org.uk