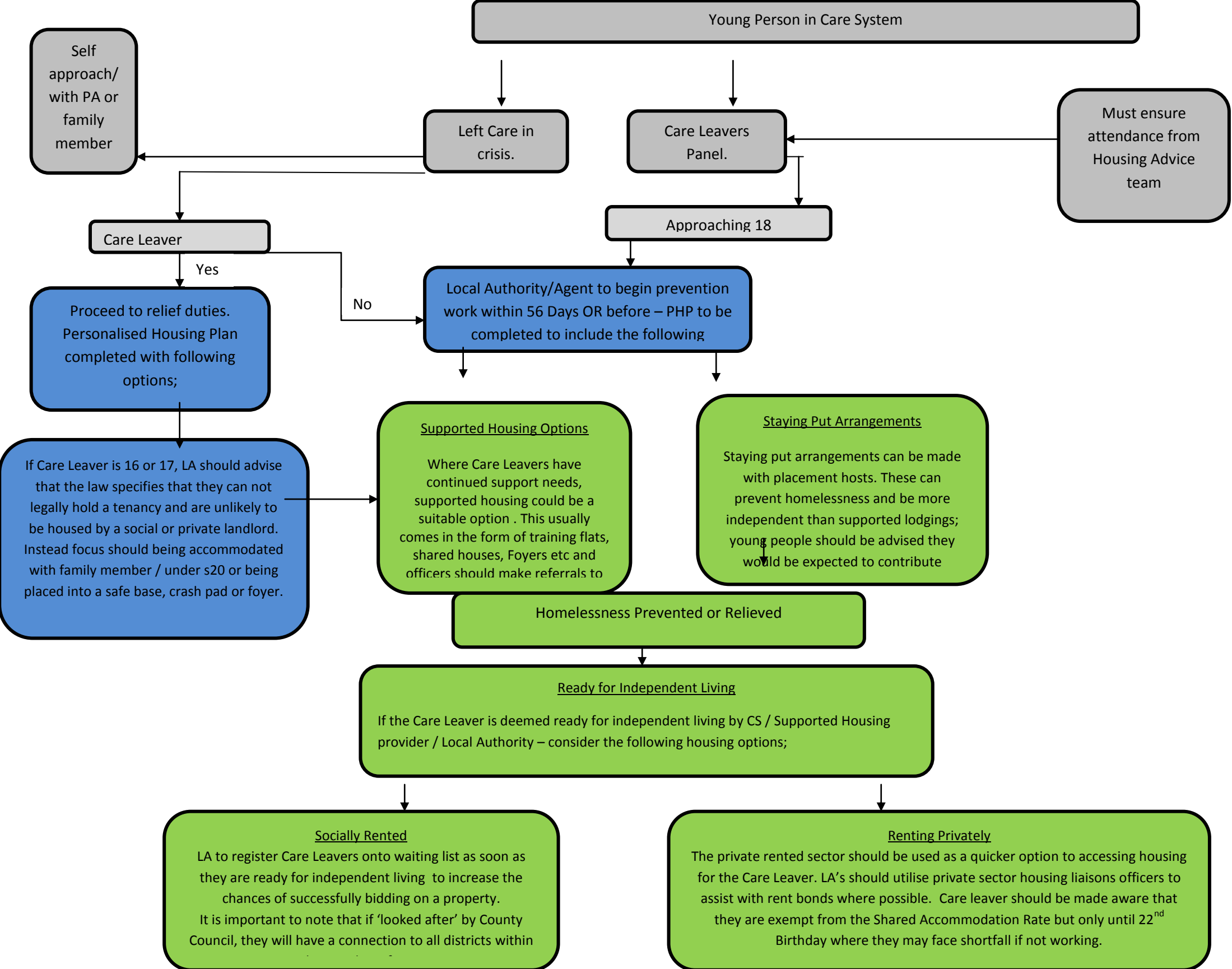


# Housing Pathway - Young Persons Leaving Local Authority Care

Personal Advisors will discuss and help plan housing and accommodation needs as part of young persons Pathway Plan. At 18 the Care Leavers' Service are no longer responsible for providing accommodation and therefore the below flow chart should be used to form a pathway into housing for Care Leavers. Local Authority Officers, Young People Pathway Worker's and/or senior staff should attend panels to intervene early with cases. PA's should work closely with Housing Officers to ensure actions in PHP's are being completed by Care Leavers.



**Local Authority Housing Options Teams – housing advice and assistance**

**Wychavon District Council**

[www.wychavon.gov.uk](http://www.wychavon.gov.uk)

**Malvern Hills District Council**

[www.malvern hills.gov.uk](http://www.malvern hills.gov.uk)

**Bromsgrove District Council**

[www.bromsgrove.gov.uk](http://www.bromsgrove.gov.uk)

**Redditch Borough Council**

[www.redditchbc.gov.uk](http://www.redditchbc.gov.uk)

**Worcester City Council**

[www.worcester.gov.uk](http://www.worcester.gov.uk)

**Wyre Forest District Council**

[www.wyreforestdc.gov.uk](http://www.wyreforestdc.gov.uk)

Local Support /Accommodation Services

Care Leavers are entitled to receive support from a personal advisor (care leavers team) who can work closely with housing teams to find suitable accommodation.

They can continue to support Care Leavers up until the age of 21 or 25 if in full time education even after accommodation is found.

Tel: 01905 845613

Website: <https://ylyc.worcestershire.gov.uk/care-and-support/care-leavers/support-for-care-leavers>

St Basils provides housing for young people aged 16-24 who are homeless or threatened with. It is particular useful in offering affordable suitable housing for care leavers and also operates a floating support service.

Tel: 01562 746304

Website: <http://www.stbasils.org.uk/st-basils-in-your-area/wyre-forest>

Axis delivers a centralised youth hub that will provide holistic support to young people (up to the age of 25) in crisis. This will include Care Leavers and the support ranges from assistance in making housing applications, financial and well being advice to breakdown of family relations and employment.

Tel: 01562 743 336

Website: <https://www.axisyouthhub.org/about-axis>

National Support/Accommodation Services

Shelter is a national charity that provides specific advice for people leaving care on housing and homelessness.

Tel: 0808 800 444

Website: [https://england.shelter.org.uk/housing\\_advice/housing\\_for\\_young\\_people/help\\_and\\_housing\\_for\\_care\\_leavers](https://england.shelter.org.uk/housing_advice/housing_for_young_people/help_and_housing_for_care_leavers)

Turn2us is a charity which provides advice to care leavers on the benefits they may be entitled to.

Tel: 0808 802 2000

Website: [https://www.turn2us.org.uk/Your-Situation/a-young-person-\(aged-16-17\)/Young-People-and-benefits/Care-leavers](https://www.turn2us.org.uk/Your-Situation/a-young-person-(aged-16-17)/Young-People-and-benefits/Care-leavers)