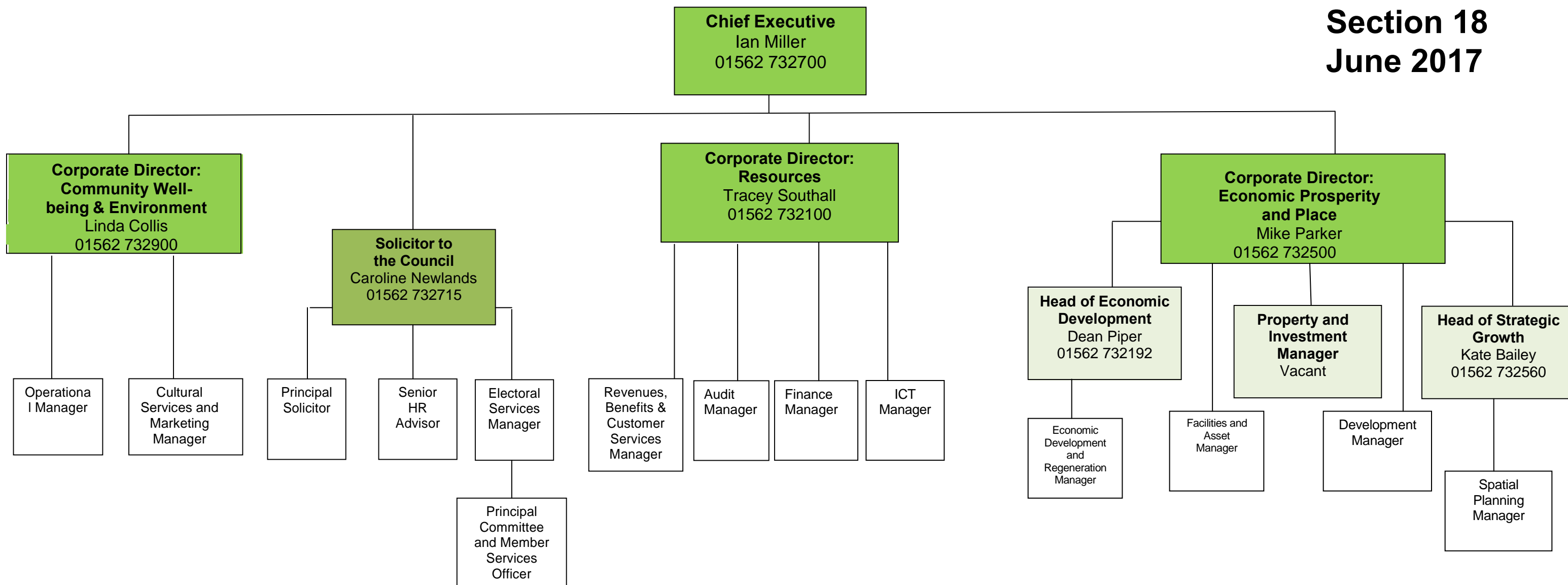


Wyre Forest District Council Management Structure

Section 18
June 2017



Responsibilities

Corporate Director: Community Well-Being and Environment	Chief Executive Other Corporate Leadership Team members: <ul style="list-style-type: none"> Solicitor to the Council 	Corporate Director: Resources	Corporate Director: Economic Prosperity and Place
Community safety Leisure services Operations inc waste/civil enforcement/fleet/garage Parks and open spaces Communications Partnerships Emergency planning	<ul style="list-style-type: none"> Legal services Human resources Elections Committee administration Policy and performance Wyre Forest Forward programme management	Accountancy Internal audit Procurement Payroll ICT services Customer services Revenues, benefits and welfare	Planning policy Economic Development and Regeneration Development Control Land Charges Building Control Strategic Housing Environmental Health Licensing Asset management