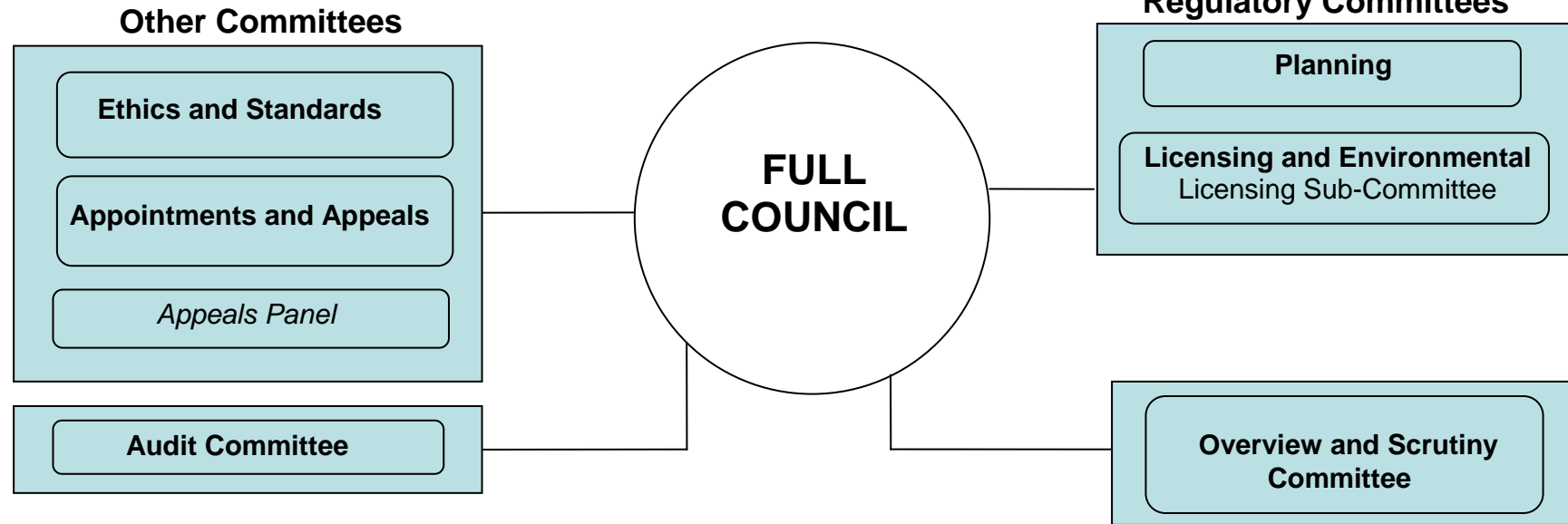




Political Structure August 2018



The Cabinet					
<p>Cllr Marcus Hart Leader of the Council and Cabinet Member for Strategy</p> <p>Strategic policy co-ordination National & Regional Influence Oversight of strategic projects including Wyre Forest House and depot investment project Localism agenda including asset transfers; relations with parish councils Emergency planning Partnerships, policy and performance Communication & branding</p>	<p>Cllr Ian Hardiman Deputy Leader and Cabinet Member for Housing, Health & Well-being</p> <p>Strategic Housing, Private Sector Housing & Homelessness Spatial Planning inc Local Plan Land charges Health & Well-being Sustainability Water Management</p>	<p>Cllr Nathan Desmond Cabinet Member for Resources</p> <p>Finance & Audit Legal Services Democratic Services Human Resources Revenues & Benefits Customer Services Information and Communication Technology Capital Portfolio Fund, Development Loan Fund Building Maintenance & Facilities Management Wyre Forest Forward Equality & diversity</p>	<p>Cllr Juliet Smith Cabinet Member for Culture, Leisure and Community Protection</p> <p>Cultural and leisure Services Countryside Service Regulatory Services Community Safety Income generation, safeguarding, relations with voluntary sector</p>	<p>Cllr Rebecca Vale Cabinet Member for Operational Services</p> <p>Parks and open spaces Grounds Maintenance Waste Reduction Refuse Collection & Recycling Fleet Management Street Cleansing Public Conveniences Parking Services Cemeteries Health and safety</p>	<p>Cllr Chris Rogers Cabinet Member for Economic Regeneration and Planning</p> <p>Economic Development & Regeneration Town Centres Tourism Implementation of Major Regeneration Projects Development Management Building Control</p>