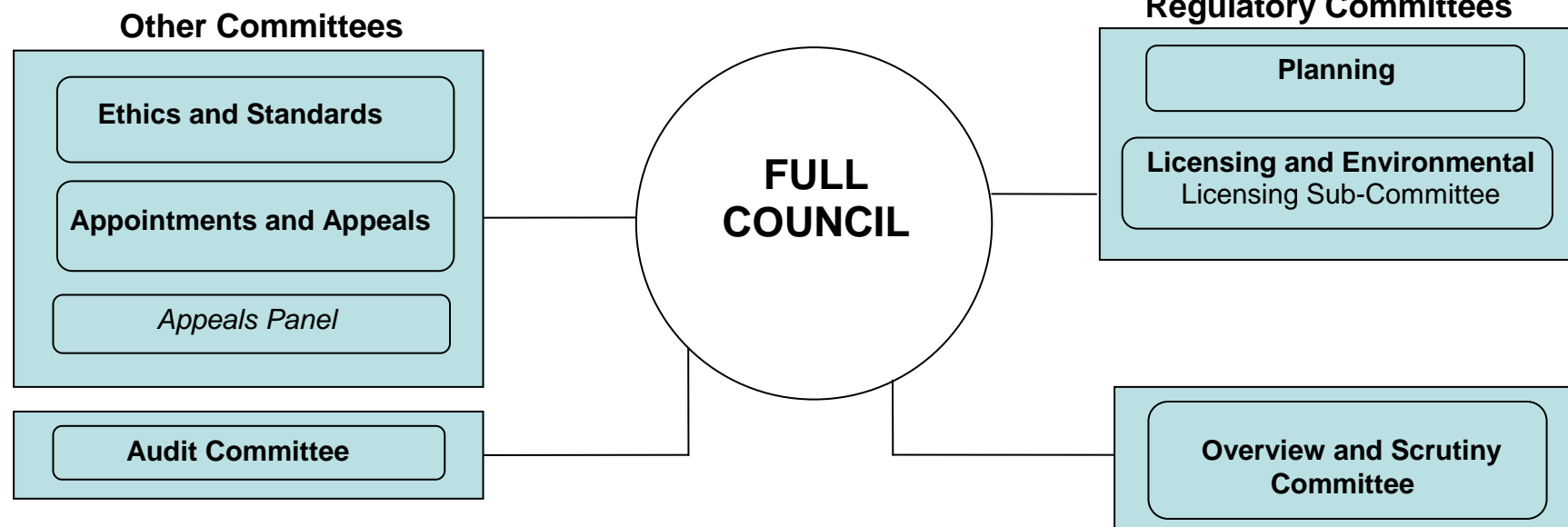




### Political Structure May 2017



The Cabinet					
<p><b>Cllr Marcus Hart</b> Leader of the Council and Cabinet Member for Strategy</p> <p>Strategic policy co-ordination National &amp; Regional Influence Oversight of strategic projects including Wyre Forest House and depot investment project Localism agenda including asset transfers; relations with parish councils Emergency planning Partnerships, policy and performance Communication &amp; branding</p>	<p><b>Cllr Ian Hardiman</b> Deputy Leader and Cabinet Member for Planning and Economic Regeneration</p> <p>Forward planning, local development framework Development Control Building Control Land charges Economic Development &amp; Regeneration Town Centres Tourism Regeneration schemes including town centre developments in Kidderminster, Bewdley Load Street, Lloyds Garage site Development of assets to support regeneration and increase income Building maintenance and facilities management</p>	<p><b>Cllr Nathan Desmond</b> Cabinet Member for Resources</p> <p>Finance &amp; Audit Legal services Democratic services Human resources Revenues &amp; benefits Customer Services Information and Communication Technology Wyre Forest Forward Equality &amp; diversity</p>	<p><b>Cllr Juliet Smith</b> Cabinet Member for Culture, Leisure and Community Protection</p> <p>Cultural and leisure services Countryside service Regulatory services Community Safety Income generation, safeguarding, relations with voluntary sector</p>	<p><b>Cllr Rebecca Vale</b> Cabinet Member for Operational Services</p> <p>Parks and open spaces Grounds Maintenance Waste Reduction Refuse Collection &amp; Recycling Fleet Management Street Cleansing Public Conveniences Parking Services Cemeteries Health and safety</p>	<p><b>Cllr Chris Rogers</b> Cabinet Member for Housing, Health and Well-being</p> <p>Housing including Registered Social Landlords, Private Sector &amp; Homelessness Health and well-being Sustainability</p>